



This QuickCard does not replace the Instruction for use REF 9000.5503

# debritom+ QuickCard - EN



## Contraindication

- Malignant tumor types
- Open injury to vessels, unprotected exposed vessels
- Eyes, ears, nose
- Delicate vessels and structures, such as neurovascular bundles
- for complex or highly contaminated wounds
- Patients with HIV, hepatitis C or another contagious disease

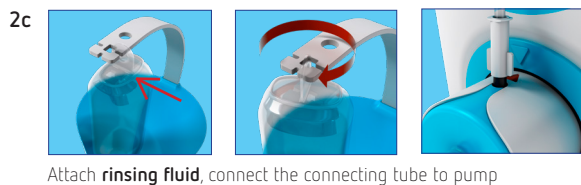
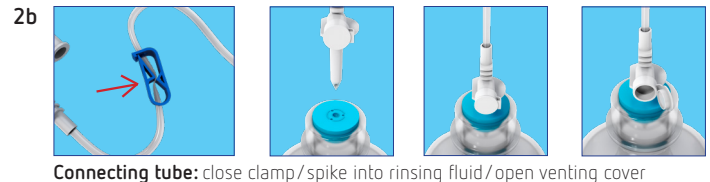
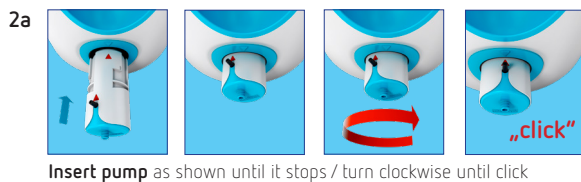
Warnings with regard to the use of the device for the following conditions, since they are associated with higher risk:

- Patients with increase tendency to hemorrhage
- Contaminated wounds

## 1. Turn on debritom+



## 2. debritom+ set-up



## 3. Test of water jet

Press foot on/off switch

- For a visual test of water jet (flat or point, water jet thickness)
- To test the water jet intensity on your hand – start with a distance of 25 cm (approx. twice the hanpiece-length). Guide the jet starting at the wound edge, and move the jet slightly back and forth.
- If something doesn't work, replace the handpiece



## 4. Optimal working parameters

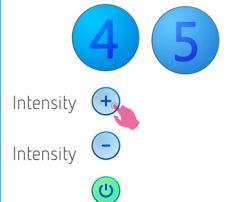
Intensity levels at START for each handpiece : Level 4 (Level 1-5/weak-strong)

- |                                     |                 |  |
|-------------------------------------|-----------------|--|
| debritom+ handpiece standard jet    | REF 2000.0003   |  |
| Working distance recommended        | <b>8 - 15cm</b> |  |
| debritom+ handpiece flat jet narrow | REF 2000.0004   |  |
| Working distance recommended        | <b>4 - 10cm</b> |  |
| debritom+ handpiece flat jet wide   | REF 2000.0005   |  |
| Working distance recommended        | <b>3 - 8cm</b>  |  |

Working angle: 3 – 45 degrees to wound surface

TIP flat jet: The flat jet should be applied like a spatula to the wound.

## 5. Intensity-Level



## 6. Patient change / end of the treatment



debritom+ OFF

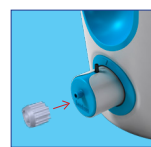
### 6a Patient change, pump one day



Close clamp



Remove handpiece and dispose of it



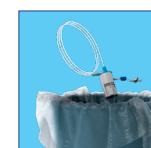
Attach LuerCap

For next patient remove LuerCap => 2d

### 6b End of the treatment



Remove connecting tube / Remove pump and handpiece as one unit and dispose of it



## 7. Error messages

**NOTE:** The on/standby button lights up red as an error message occurs. This button can be used to acknowledge the fault after rectification.



### Battery foot on/off switch almost empty

Troubleshooting: Replace batteries (Battery type 2 x LR03 / AAA, chapter 11)



### Pump in use for too long time period

Troubleshooting: Replace pump



### Handpiece in use for too long or trying to use with different single use pump

Troubleshooting: Replace handpiece



### Handpiece missing or handpiece not recognized

Troubleshooting: Replace handpiece. If the error can not be resolved, contact the Medaxis service department immediately.



### Nozzle blocked or motor overheated

Troubleshooting: Change handpiece and pump if necessary. If the error can not be resolved, contact the Medaxis service department immediately.



### Pump not inserted correctly

Troubleshooting: Replace pump and reinsert it correctly, or replace it.



### General system error

Troubleshooting: Please contact the Medaxis service department immediately.



### No foot on/off switch detected

Troubleshooting: Press the foot on/off switch. If foot on/off switch cannot be detected, replace the batteries (see IFU chapter 11) and operate the foot pedal. If the foot on/off switch is still not detected, repeat the pairing procedure (see IFU chapter 11)



### Foot on/off switch time-out

The symbol appears if the foot on/off switch is pressed too slowly or the foot on/off switch is not pressed all the way down. Troubleshooting: Release the foot on/off switch completely to acknowledge the error. Press the foot pedal all the way down to start the water jet. If the fault cannot be rectified, contact the Medaxis service department immediately.

## 8. Symbols on debritom<sup>+</sup> display



### Search for Bluetooth device for pairing

Pressing the on/standby and '+' buttons for > 1 s at debritom<sup>+</sup> will show the 'Search for Bluetooth device' symbol for pairing a new or replacement of the foot on/off switch.



### Bluetooth signal of foot on/off switch detected - confirm

As soon as debritom<sup>+</sup> has detected the Bluetooth signal of the foot on/off switch, this symbol appears on the display.



### debritom<sup>+</sup> connected with foot on/off switch

This symbol appears on the display as the foot on/off switch is connected to debritom<sup>+</sup>.



### Intensity levels

The intensity levels can be adjusted between 1 - 5. (1 weakest/5 strongest)